

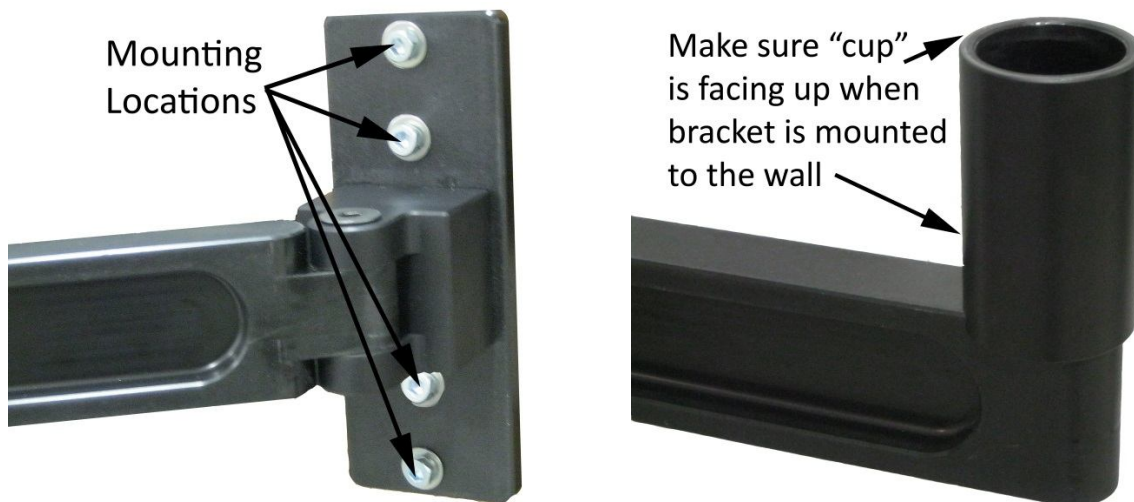
Versa II – Wall Mount Bracket Quick-Start Guide

Items included:

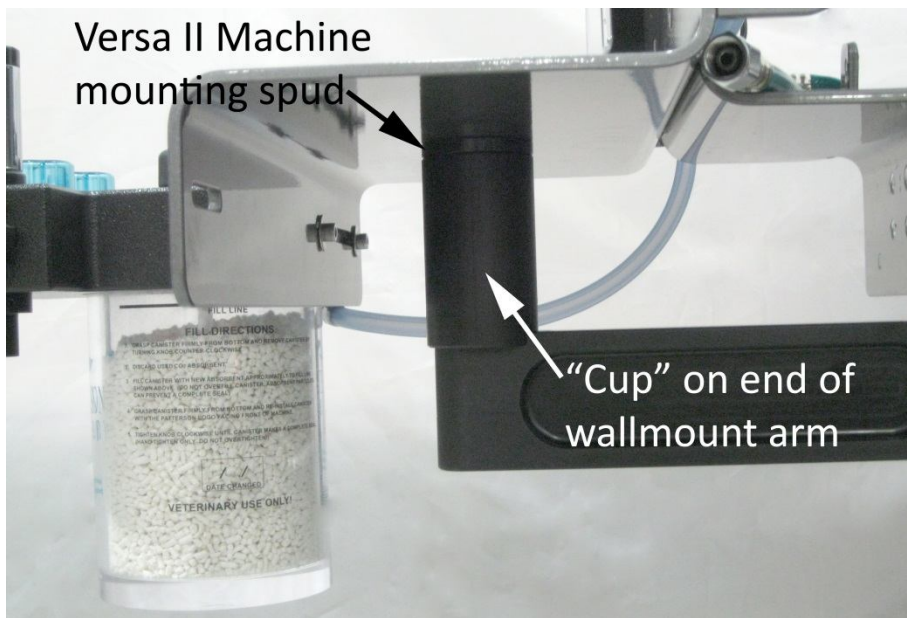
Wall Mount Bracket (assembled)
Stainless steel mounting lag screws (4) Stainless steel washers (4)

WARNING - - WARNING - - WARNING - - WARNING - - WARNING - - WARNING

Failure to mount this bracket to a solid structure in your facility can and most likely will lead to serious equipment damage as well as potentially serious injury to anyone in the area if the bracket and machine become dislodged from the wall. Do not assume that the wall is solid behind the drywall or other surface material present. Take great care to not penetrate any water pipes, electrical wiring, or other piping or structures present within the walls of your facility. Patterson Veterinary Supply assumes no responsibility for damage to equipment or injury to anyone sustained as a result of improper mounting of this product or damage to your facility occurring as a result of mounting this product.



Remove the wall mount bracket from the packaging and mount the bracket to the wall using the enclosed mounting hardware or other suitable hardware (not provided) that is appropriate for the construction in your facility. It is recommended that this bracket be mounted to the wall using all four mounting holes provided. Make sure that your bracket is oriented so that the opening in the "cup" at the end of the bracket is open from the top. This is where the mounting spud on the Versa II anesthesia machine will be placed. Use the mounting hole dimensions on the following pages.

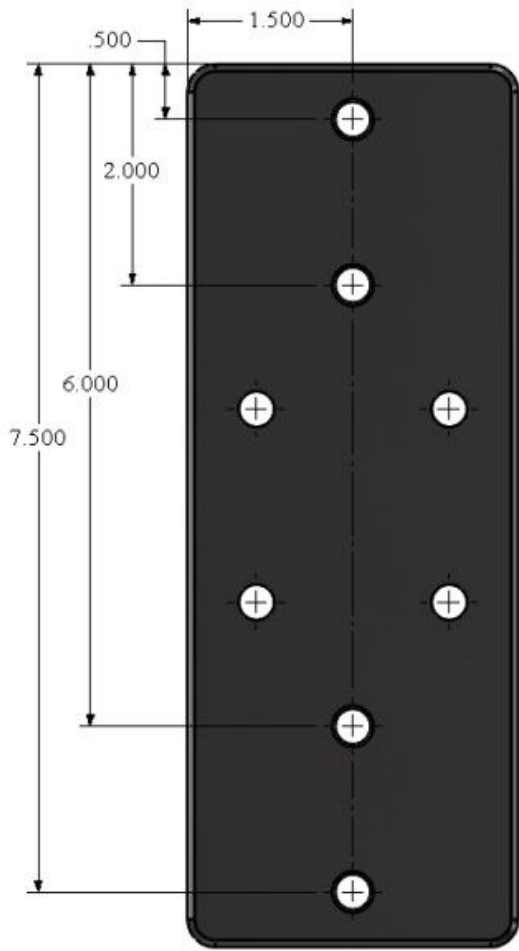


Remove the pole knob (if present) completely from the head of the Versa II anesthesia machine. Carefully remove the machine head from the top of the pole (if mounted in the pole) and install the mounting "spud" into the cup on the end of the wall mount arm. Due to the weight present in the anesthesia machine this may be easier to perform with two people.

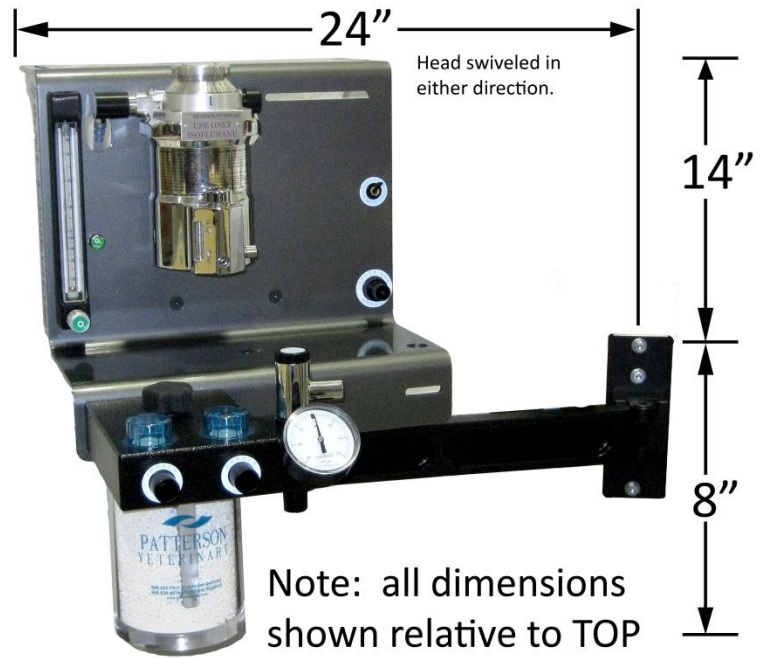


You have the option to either leave the absorber block on the machine as it comes from the factory (on front of frame) or to move it up onto the back of the frame, next to the vaporizer. Keep in mind that if you move it onto the back of the frame you will no longer be able to mount a second vaporizer. If you wish to move the absorber block you will need to visit www.pattersonscientific.com/manuals and download the quick-start guide for tabletop option and follow the instructions for moving the absorber block.

Use the following dimensions to mount your wallmount bracket to the wall and keep other equipment away by an appropriate amount to allow for full access and movement of the Versa II anesthesia machine.



WALLMOUNT PLATE



Note: all dimensions shown relative to TOP mounting hole in bracket.